



# DISABLE

**GOVERNMENT COLLEGE JAITHARI,  
DISTRICT- ANUPPUR (M.P.) INDIA**

# POLICY

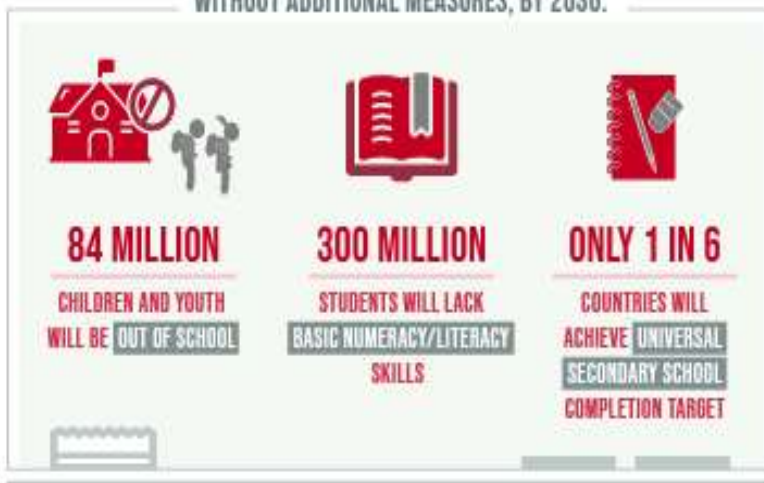


# ENSURE INCLUSIVE AND EQUITABLE QUALITY EDUCATION AND PROMOTE LIFELONG LEARNING OPPORTUNITIES FOR ALL

DESPITE SLOW PROGRESS,

## THE WORLD IS FALLING FAR BEHIND IN ACHIEVING QUALITY EDUCATION

WITHOUT ADDITIONAL MEASURES, BY 2030:

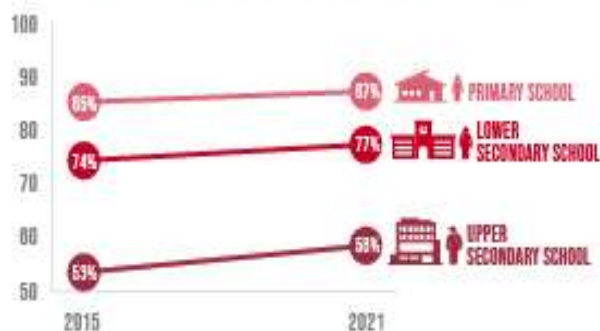


THE PANDEMIC

CAUSED LEARNING LOSSES IN **4 IN 5** OF 104 COUNTRIES STUDIED

## PRIMARY AND SECONDARY SCHOOL COMPLETION RATES ARE **RIISING**, BUT THE PACE IS SLOW AND UNEVEN

COMPLETION RATES



LOW- AND LOWER-MIDDLE-INCOME COUNTRIES FACE A NEARLY

**\$100 BILLION**

**ANNUAL FINANCING GAP**

TO REACH THEIR EDUCATION TARGETS



**Mr. Ashok Kumar Rathour**

Adhyaksh

Janbhagidari Samiti Govt. College Jaithari, Anuppur (M.P.)

**Forward**



**Dear Esteemed Members of Government College Jaithari,**

As the Adhyaksh of the Janbhagidari Samiti of Government College Jaithari, District Anuppur, Madhya Pradesh, it gives me immense pleasure to present this foreword to our comprehensive College Policy. Since our institution's establishment in 2012, we have been on a journey of growth, learning, and community engagement. This policy document marks another significant milestone in our college's development.

The Janbhagidari Samiti, or Public Participation Committee, plays a crucial role in bridging the gap between the college and the community. Our committee's vision aligns perfectly with the college's mission to provide quality education while fostering a sense of social responsibility among our students.

This College Policy is a testament to our collective efforts to create an institution that not only excels in academics but also prepares students to be responsible citizens. It encompasses various aspects of college life, from academic standards to community outreach programs, reflecting our commitment to holistic education.

I urge all stakeholders - students, faculty, staff, and community members - to embrace this policy wholeheartedly. It is through your active participation and adherence to these guidelines that we can truly realize the potential of our institution.

As we move forward, let us remember that the strength of our college lies in the spirit of 'Janbhagidari' - public participation. This policy is not just a document, but a shared vision for our college's future. Together, we can build an educational institution that serves as a beacon of knowledge and social progress in our region.

I look forward to your continued support and cooperation in implementing this policy and in furthering the growth of Government College Jaithari.

**Sincerely,**

**Mr. Ashok Kumar Rathour  
Adhyaksh- Janbhagidari Samiti  
Govt. College Jaithari  
District Anuppur, (M.P.)**



**Dr. Ramesh Singh Wate**

Principal

Govt. College Jaithari, Anuppur (M.P.)

## Forward



**Dear Students, Faculty, and Staff,**

As the Principal of Government College Jaithari, District Anuppur, Madhya Pradesh, it is my privilege to present our comprehensive College Policy. This document serves as a cornerstone for our institution, outlining our vision, mission, and the guiding principles that shape our academic environment.

Our college policy is designed to foster an atmosphere of academic excellence, personal growth, and social responsibility. It reflects our commitment to providing quality education while nurturing the diverse talents of our students. The policy encompasses various aspects of college life, including academic standards, code of conduct, extracurricular activities, and community engagement.

I encourage all members of our college community to familiarize themselves with this policy. It is not merely a set of rules, but a roadmap for our collective success. By adhering to these guidelines, we create a harmonious and productive learning environment that benefits everyone.

As we move forward, let us embrace these policies with enthusiasm and dedication. Together, we can build a college that not only imparts knowledge but also shapes responsible citizens who will contribute positively to society.

I look forward to working with all of you in upholding the high standards set forth in this policy and in continually striving for excellence in all our endeavors.

**Sincerely,**

**Dr. Ramesh Singh Wate**  
**Principal**  
**Govt. College Jaithari**  
**District-Anuppur (M.P.)**

# Govt. College Jaithari, Anuppur M.P.

## Department of Higher Education M.P.

### Disable Policy

**1. Purpose:** The purpose of this Disability Policy is to affirm Govt. College Jaithari commitment to providing equal opportunities, promoting inclusivity, and ensuring accessibility for individuals with disabilities in all aspects of academic and campus life.

**2. Scope:** This policy applies to all students, faculty, staff, contractors, and visitors at Govt. College Jaithari.

#### **3. Definitions:**

- **Disability:** A physical or mental impairment that substantially limits one or more major life activities.
- **Reasonable Accommodation:** Modifications or adjustments that enable individuals with disabilities to participate fully and equally in all aspects of college life.

**4. Non-Discrimination:** Govt. College Jaithari prohibits discrimination on the basis of disability. All college programs, services, and activities shall be accessible to individuals with disabilities.

#### **5. Accessibility:**

- Ensure that all facilities, including classrooms, laboratories, offices, and recreational areas, are designed and maintained to be accessible to individuals with disabilities.
- Provide accessible pathways, ramps, elevators, and restrooms.

#### **6. Accommodations for Students:**

- Establish an office for disability services to coordinate accommodations for students.
- Provide a clear process for students to request accommodations and engage in an interactive process to determine reasonable accommodations.

#### **7. Accommodations for Faculty and Staff:**

- Develop procedures for faculty and staff to request accommodations in their work environment.
- Provide flexibility in work schedules or job duties when necessary and reasonable.

## **8. Communication:**

- Ensure that all college communications, including websites, documents, and announcements, are accessible to individuals with disabilities.
- Provide alternative formats upon request.

## **9. Assistive Technology:**

- Invest in and maintain assistive technology to enhance accessibility in classrooms and workspaces.
- Provide training on the use of assistive technology for both faculty and students.

## **10. Awareness and Training:**

- Conduct regular training sessions for faculty, staff, and students on disability awareness and the college's commitment to inclusivity.
- Provide resources and information on creating an inclusive and accessible campus culture.

## **11. Grievance Procedure:**

- Establish a clear and accessible procedure for addressing grievances related to disability discrimination.
- Appoint a designated individual or office to handle disability-related complaints.

## **12. Accessibility in Events:**

- Ensure that all college-sponsored events are accessible to individuals with disabilities.
- Provide information about accessibility features when promoting events.

**13. Review and Revision:** This Disability Policy will be reviewed annually and updated as necessary to reflect changes in regulations or best practices.

**Prepared By:-** Dr. Khushboo Khan

**Verified By :-** Dr. Jeetendra Singh Dhurve

**Coordinator IQAC  
Govt. College Jaithari**

**Principal  
Govt. College Jaithari  
Anuppur (M.P.) 484330**